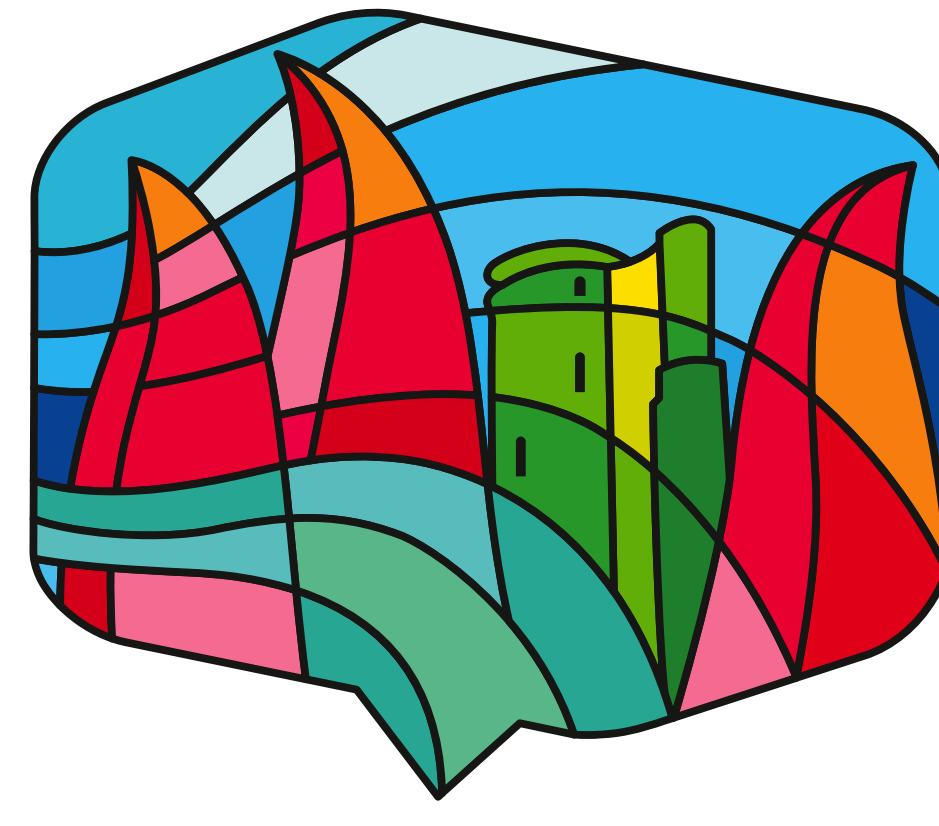


WORLD  
URBAN  
FORUM  
THIRTEENTH SESSION

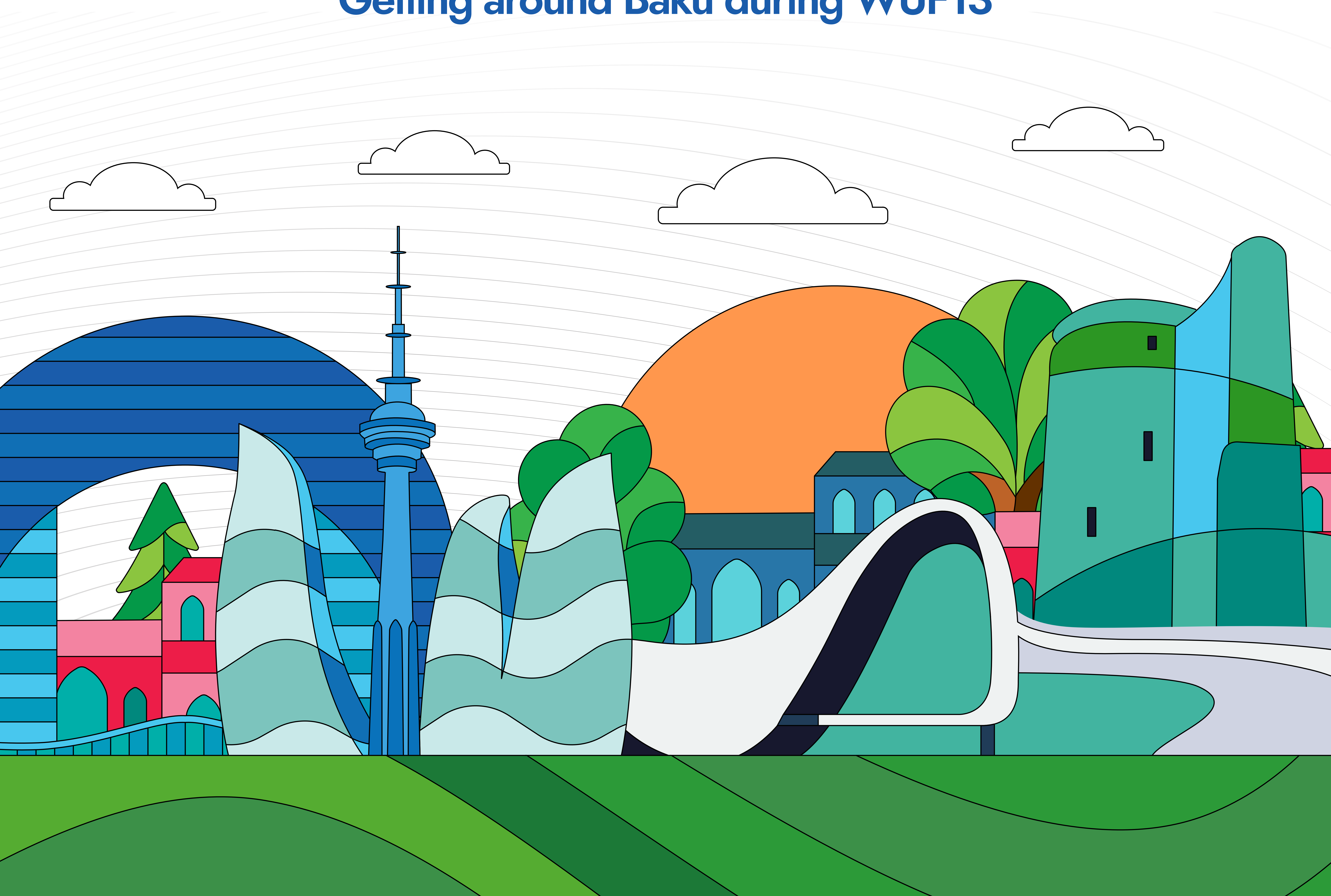


# WUF13

# TRANSPORT GUIDE

The thirteenth session of the World Urban Forum (WUF13)  
Baku, Azerbaijan | 17–22 May 2026

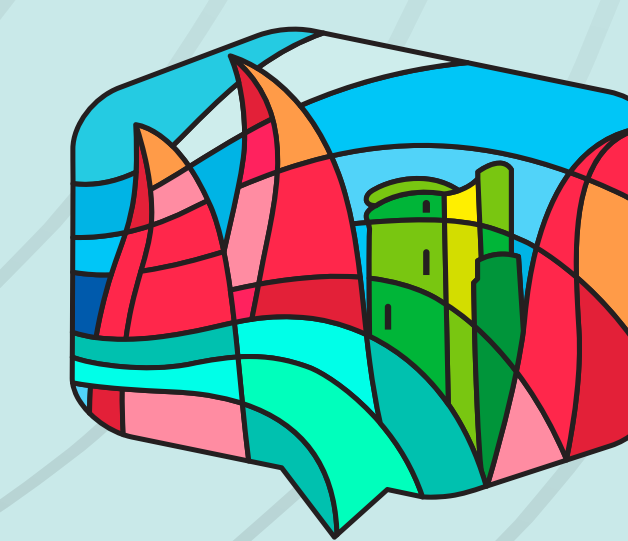
## Getting around Baku during WUF13



# CONTENT

1. Transport overview
2. Your transport journey
3. WUF13 airport shuttle services
4. WUF13 city shuttle network
5. Getting to the WUF13 venue via Koroghlu
6. Getting around the WUF13 venue
7. Accessible travel and support services
8. Transport help and information





## Transport Overview

The **WUF13 transport** system combines dedicated shuttle services with Baku's public transport network, making it easy to travel between the airport, accommodation areas and the **WUF13 venue**.

## WUF13 Transport Services

Transport	Operating hours	Interval
City shuttle buses	06:00 – 21:00	5-15 min
Airport shuttle buses	24 hours	30 min

## Public Transport Services

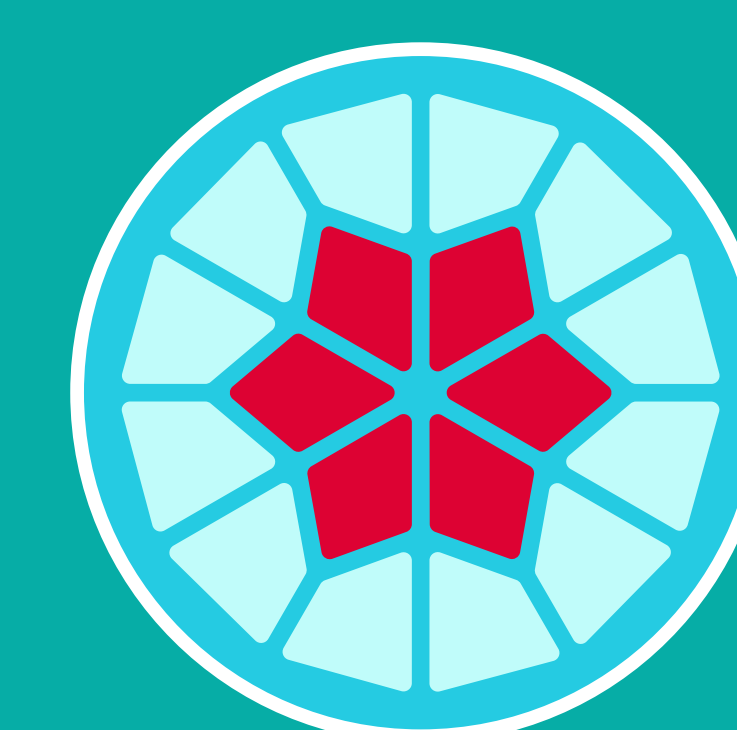
Railway	06:30 – 23:00	15 – 40 min
Suburban train intervals: Peak: 15-25 min Average: 20-40 min Off-peak: up to 1 hour Note: Services run more frequently during peak periods and less frequently during off-peak hours.		
Metro	06:00 – 00:00	2 – 4 min

## Taxi & Ride-hailing

Baku Taxi 📞1000	24 hours	On demand
Ride-hailing	24 hours	On demand

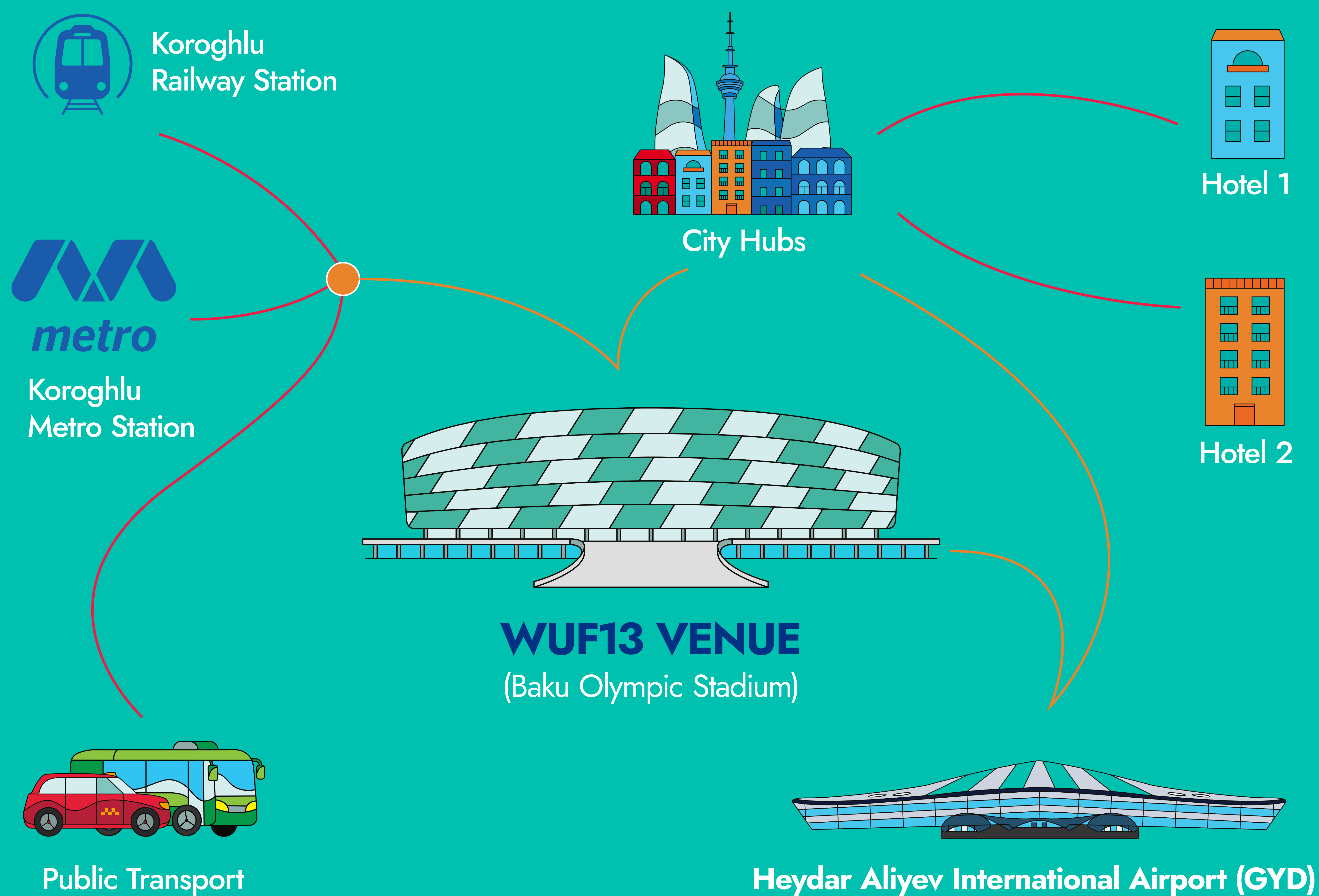
### Tips:

WUF13 shuttle buses are free for accredited participants. Public transport and taxi services operate at standard fares unless otherwise stated.



## Your Transport Journey

You can reach the WUF13 venue using a range of transport options, including airport shuttles, city hubs, and public transport.



1. Heydar Aliyev International Airport (GYD) - Hubs
2. Heydar Aliyev International Airport (GYD) - WUF13 venue (direct transfer)
3. City Hubs - WUF13 venue
4. Public Transport - Shuttle - WUF13 venue

## WUF13 Shuttle Services

**WUF13 Airport Shuttle Services (A1–A6)** — connects the airport to key locations across the city

**City Shuttle (W1–W10)** — connects accommodation areas to the WUF13 venue

**K1 Shuttle** — direct service from Koroghlu Hub to the WUF13 venue

## WUF13 Airport Shuttle Services

Upon arrival at Heydar Aliyev International Airport (GYD), WUF13-accredited participants can use dedicated airport shuttles to reach key city hubs, with easy onward connections to hotels and the WUF13 venue.

**Note:** If your badge has not yet been issued, your online registration confirmation will be accepted.

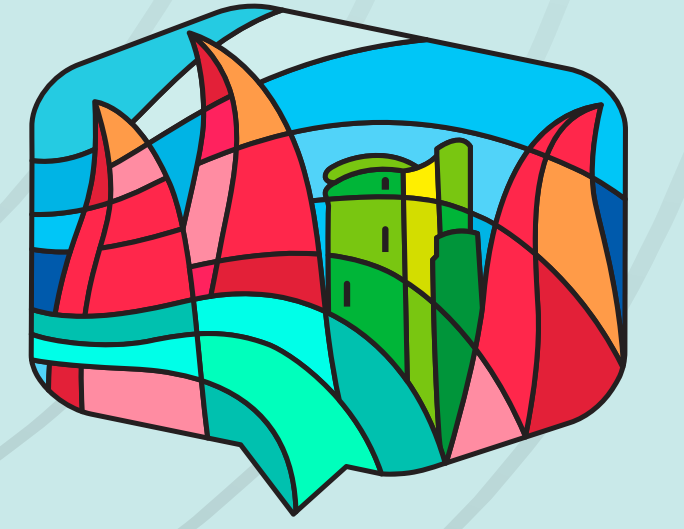
## Airport Taxi Services and Private Transfer

Licensed airport taxis are available 24/7 at both terminals. You can book at the Terminal 1 and Terminal 2 taxi ranks, via apps, or online platforms.

For further information: [Airport Transfers](#)

**Note:** Ride-hailing taxi pick-up services are available only from Terminal 2.



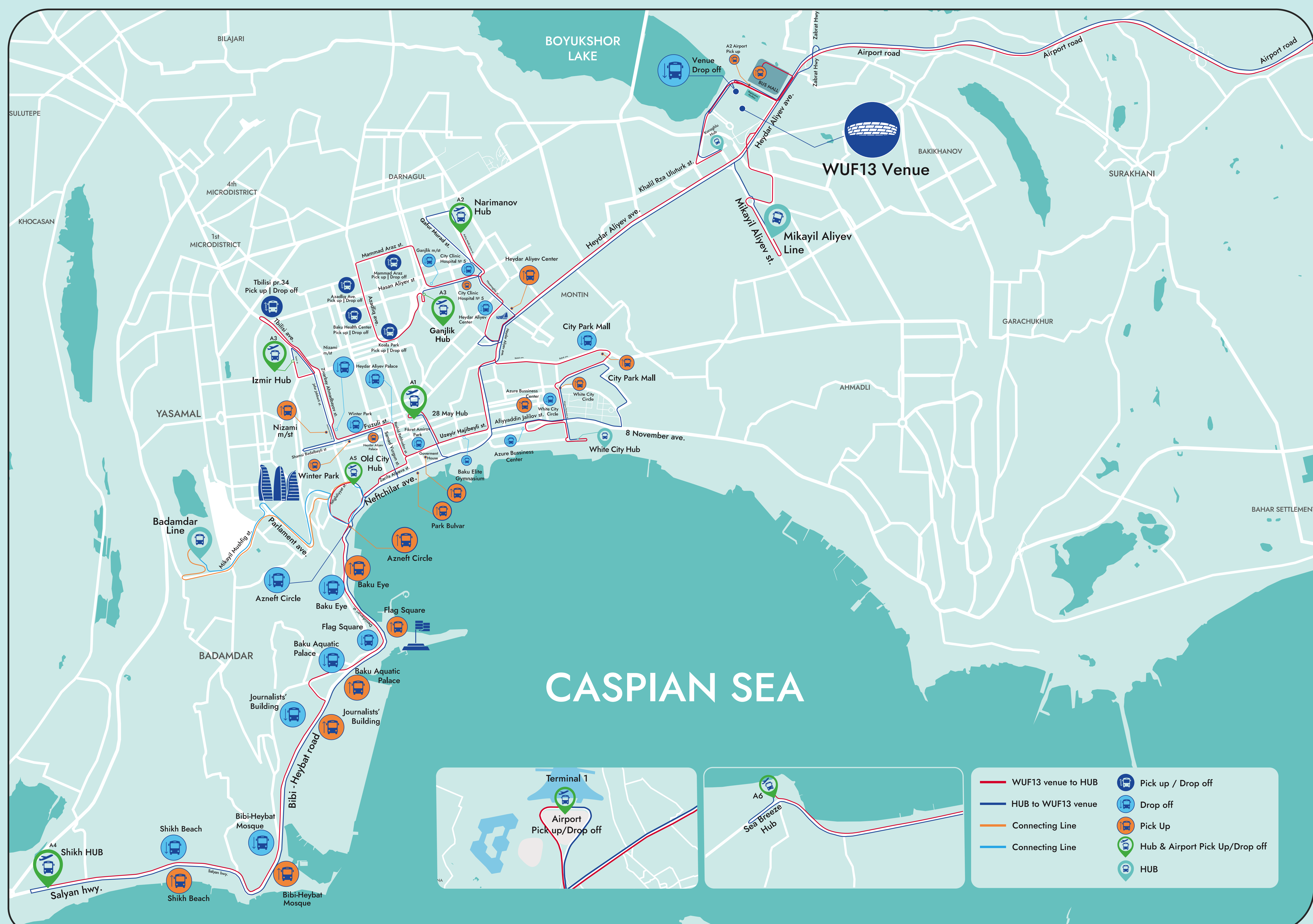


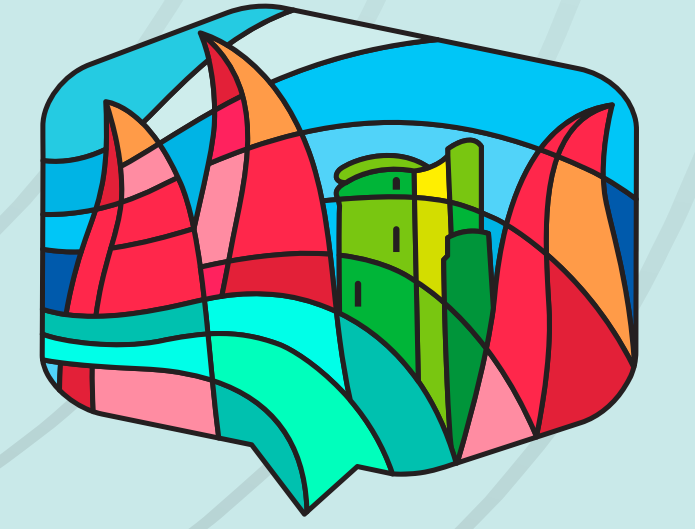
## Airport Shuttles

Destination	Stop	Interval
A1 – 28 May	-	30 min
A2 – Narimanov	WUF13 venue	30 min
A3 – Izmir	Ganjlik	30 min
A4 – Shikh	Flag Square	30 min
A5 – Old City	-	30 min
A6 – Sea Breeze	-	30 min

## WUF13 City Shuttle Network

The WUF13 city shuttle network connects major accommodation areas across Baku with the WUF13 venue through a system of mobility hubs, shuttle lines, and transfer points.





## Mobility Hubs

The WUF13 shuttle network operates through nine key hubs across the city:

- 📍 W1 – Shikh
- 📍 W2 – Old City
- 📍 W3 – Narimanov
- 📍 W4 – Izmir
- 📍 W5 – 28 May
- 📍 W6 – Ganjlik
- 📍 W7 – White City
- 📍 W8 – Sea Breeze
- 📍 K1 – Koroghlu (main interchange for venue access)

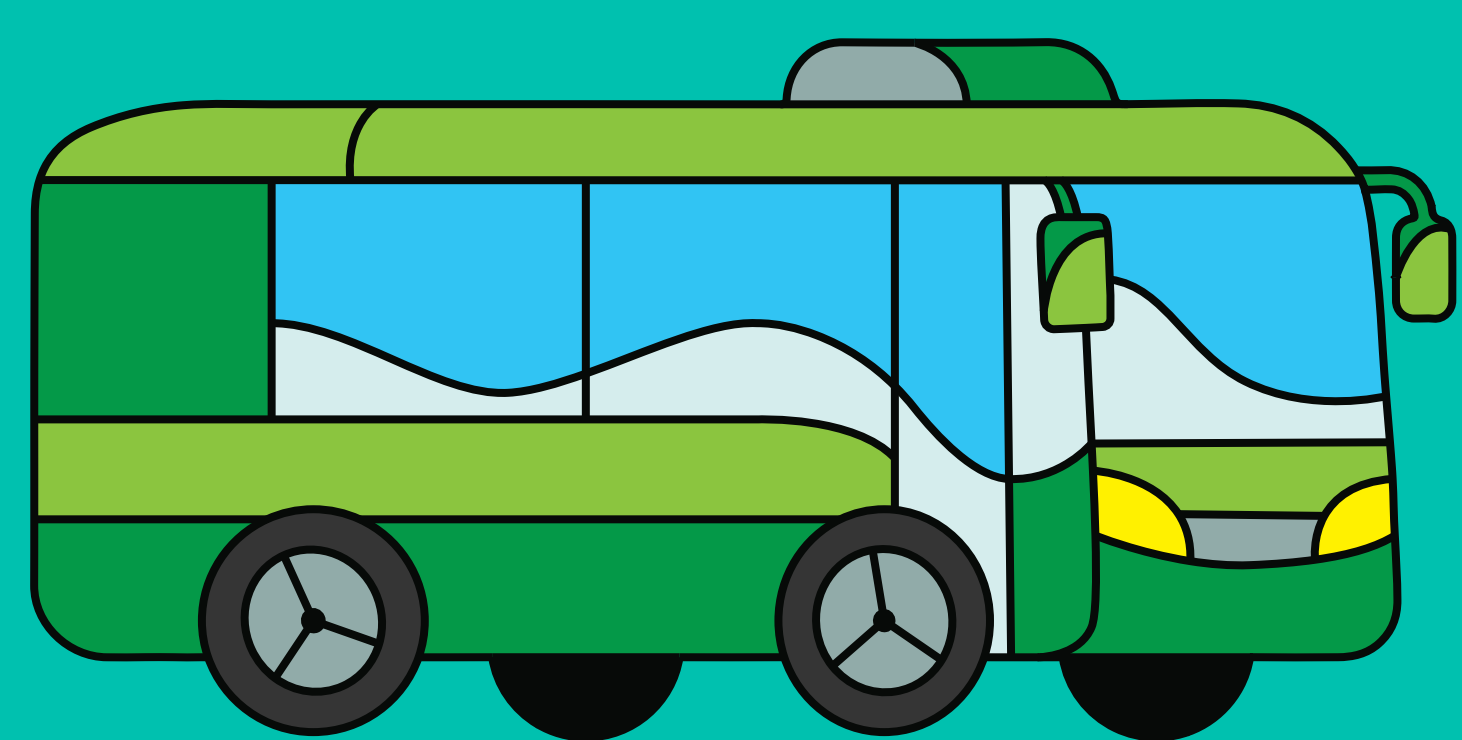


Scan the QR code to access the interactive transport map and find the nearest shuttle hub, stop and route.

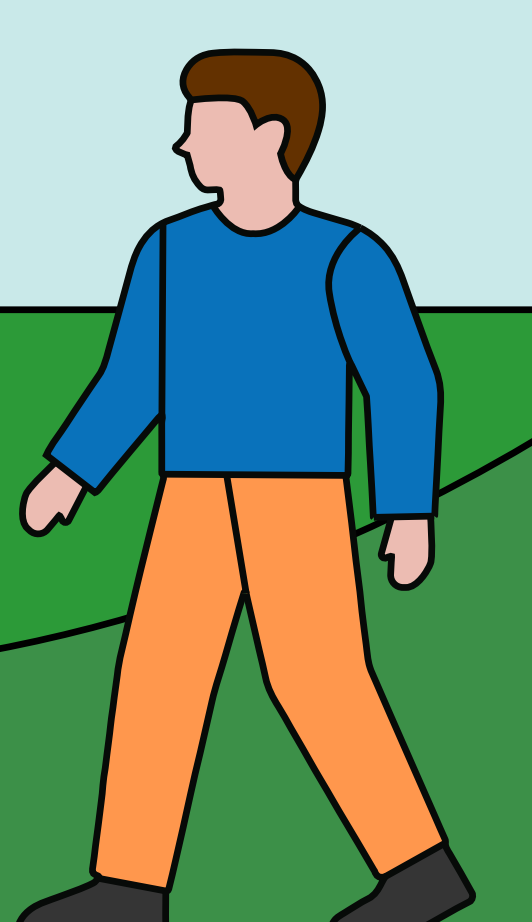
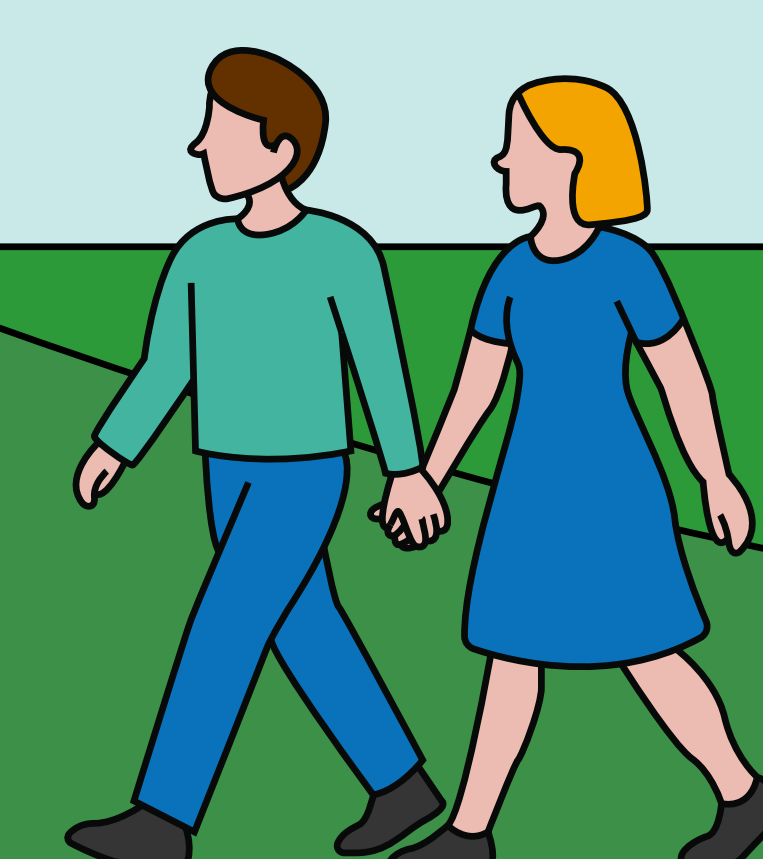
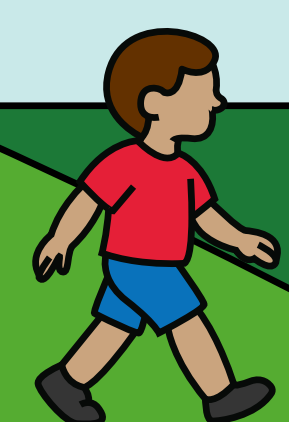
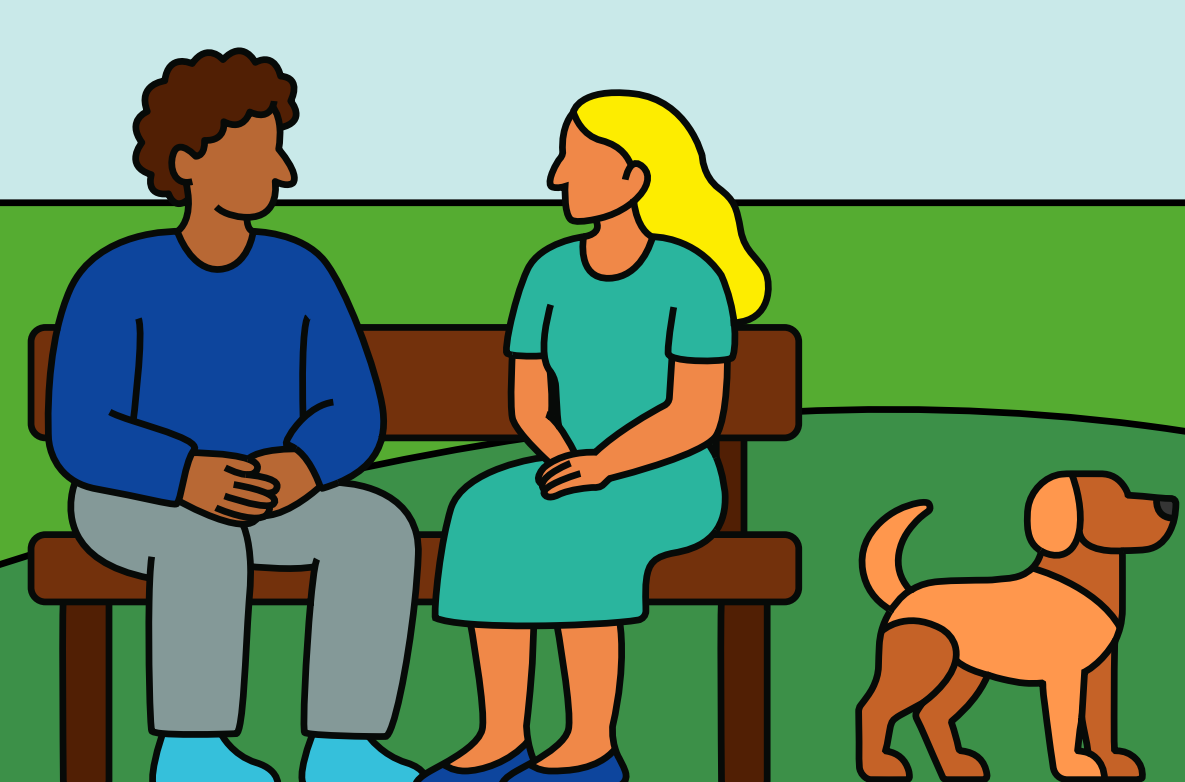
## Mobility Lines

The WUF13 shuttle network also includes **two supporting mobility lines:**

- W9 – Badamdar — connects nearby hotels to the Old City Hub
- W10 – Mikayil Aliyev — connects nearby accommodation to the WUF13 venue



WUF13-branded buses operate at designated stops and key landmarks, making them easy to spot across the city.



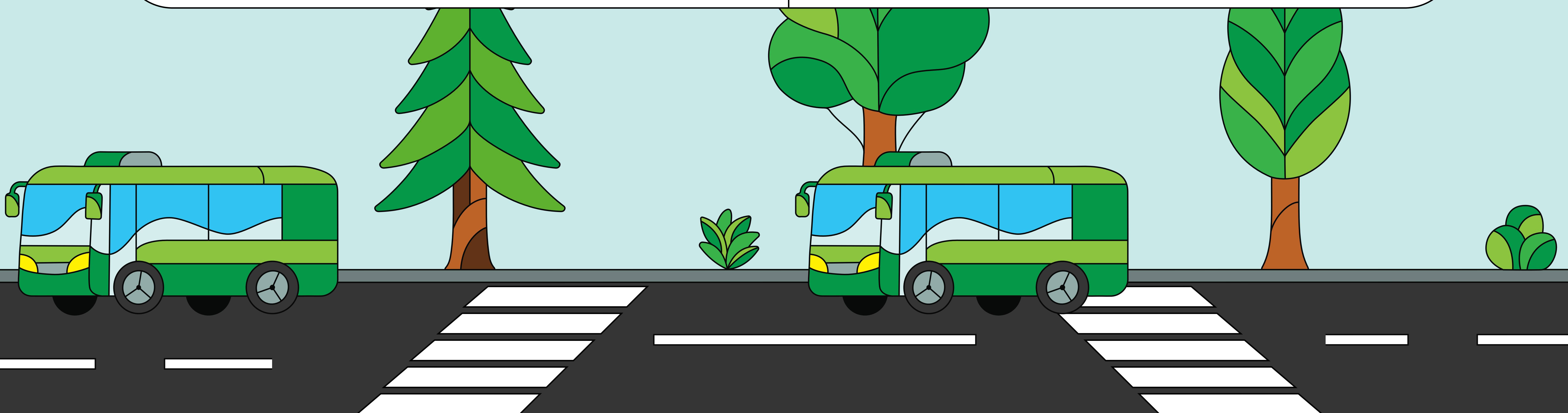


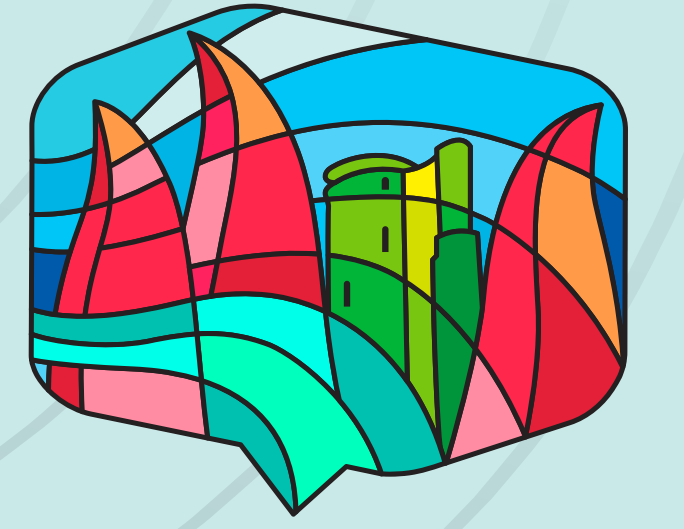
## Shuttle Pick-Up Locations

Find the nearest shuttle hub or stop to your hotel to travel easily to the venue.

### Shikh Hub - Salyan Highway

Stop	Hotels
Shikh	Green City Resort & Residence
Shikh Beach	Ramada by Wyndham Baku
Bibi-Heybat Mosque	Sapphire Marine
Journalist Building	Residential Building for Journalists
Baku Aquatic Palace	For guests staying nearby
Green City	Sapphire Bayil Hotel
	Golden Coast Hotel
	Park Dedeman Baku
	Marison Hotel
	Crown Suites Hotel
Baku Eye	Home Suites Baku-Halal Hotel
	Panorama Hotel
Azneft Circle	Sheraton Baku Intourist Hotel
	Four Seasons Hotel Baku
	Promenade Hotel Baku





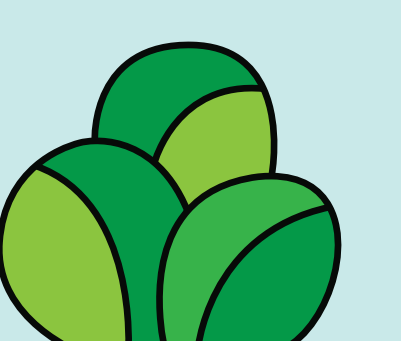
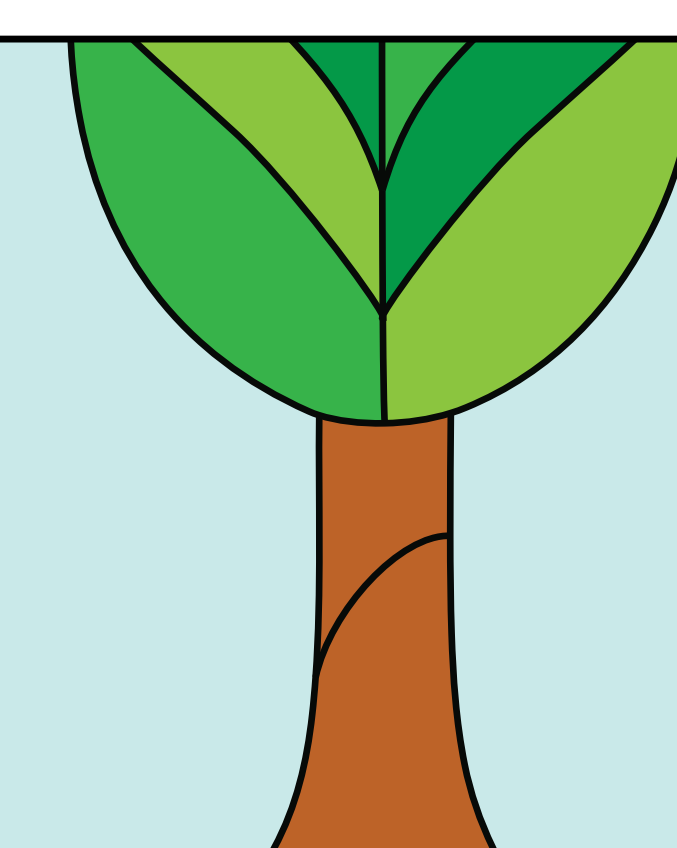
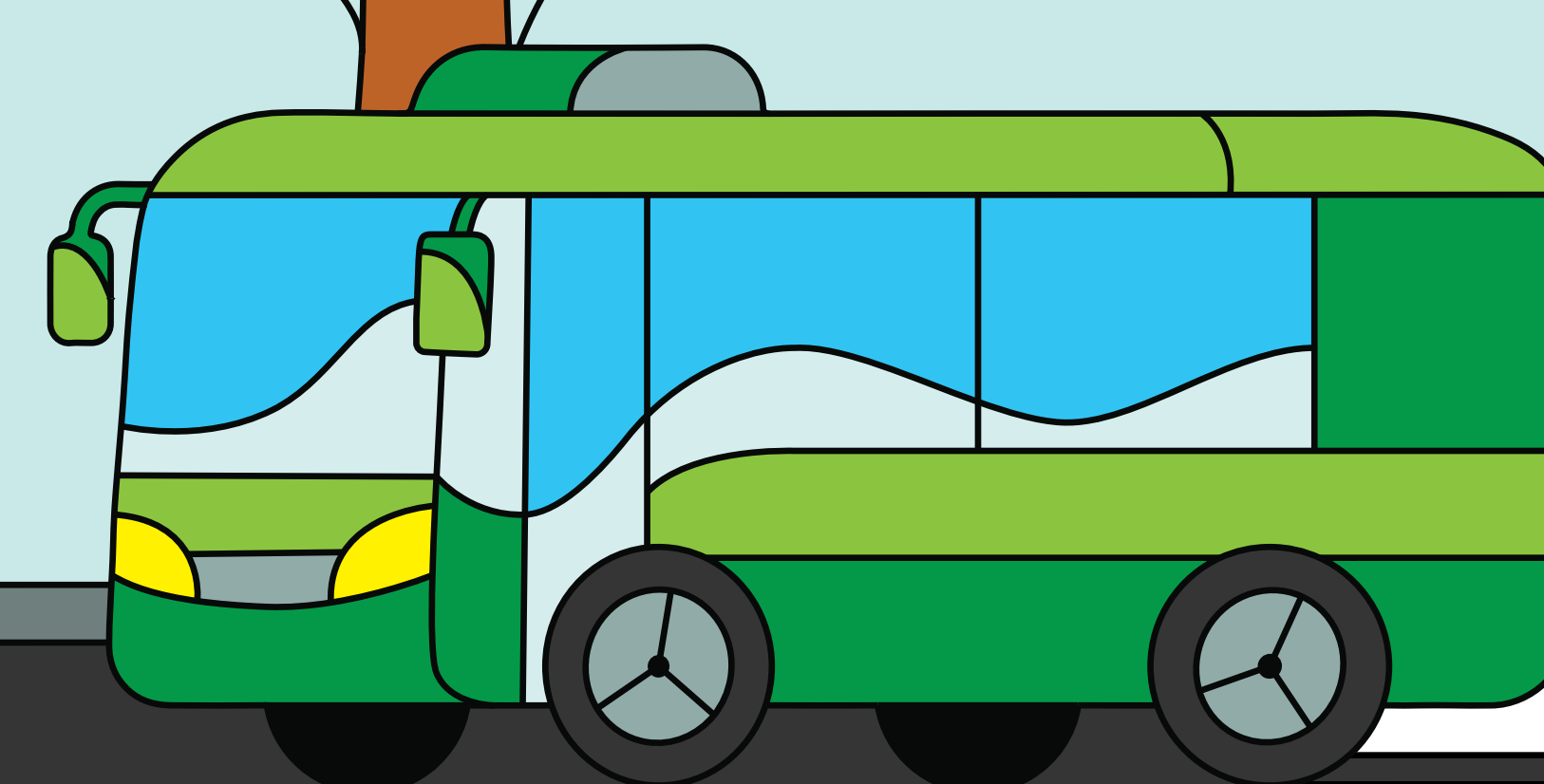
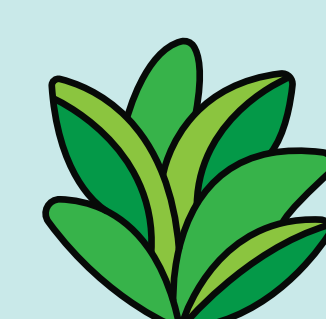
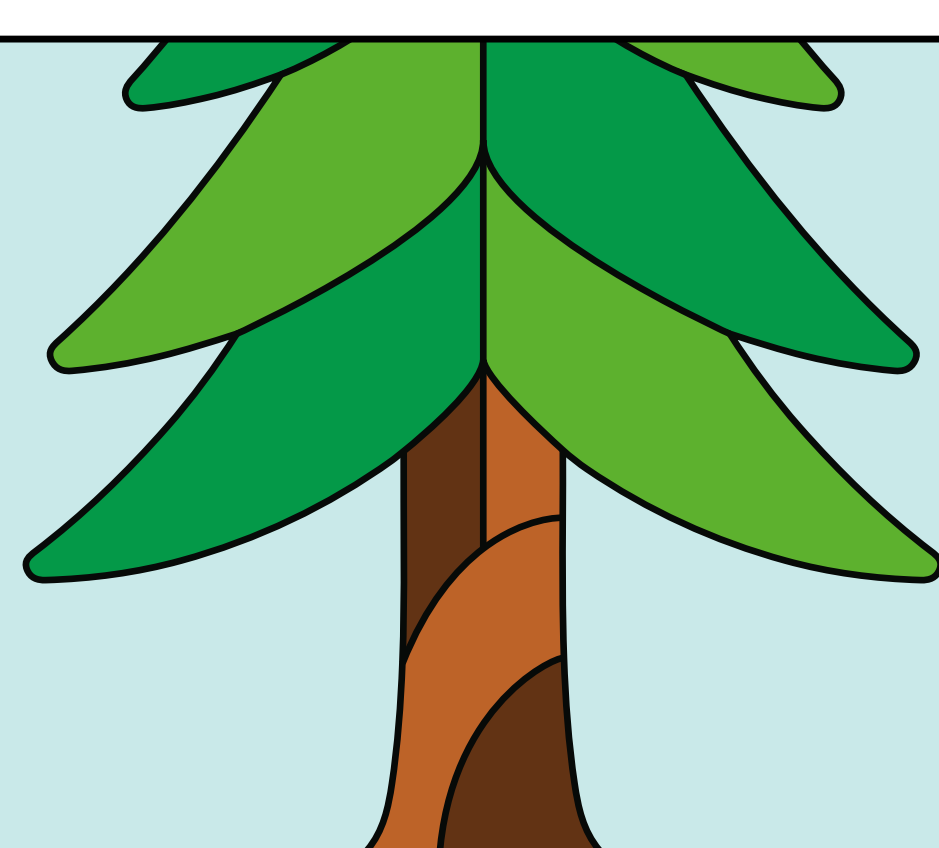
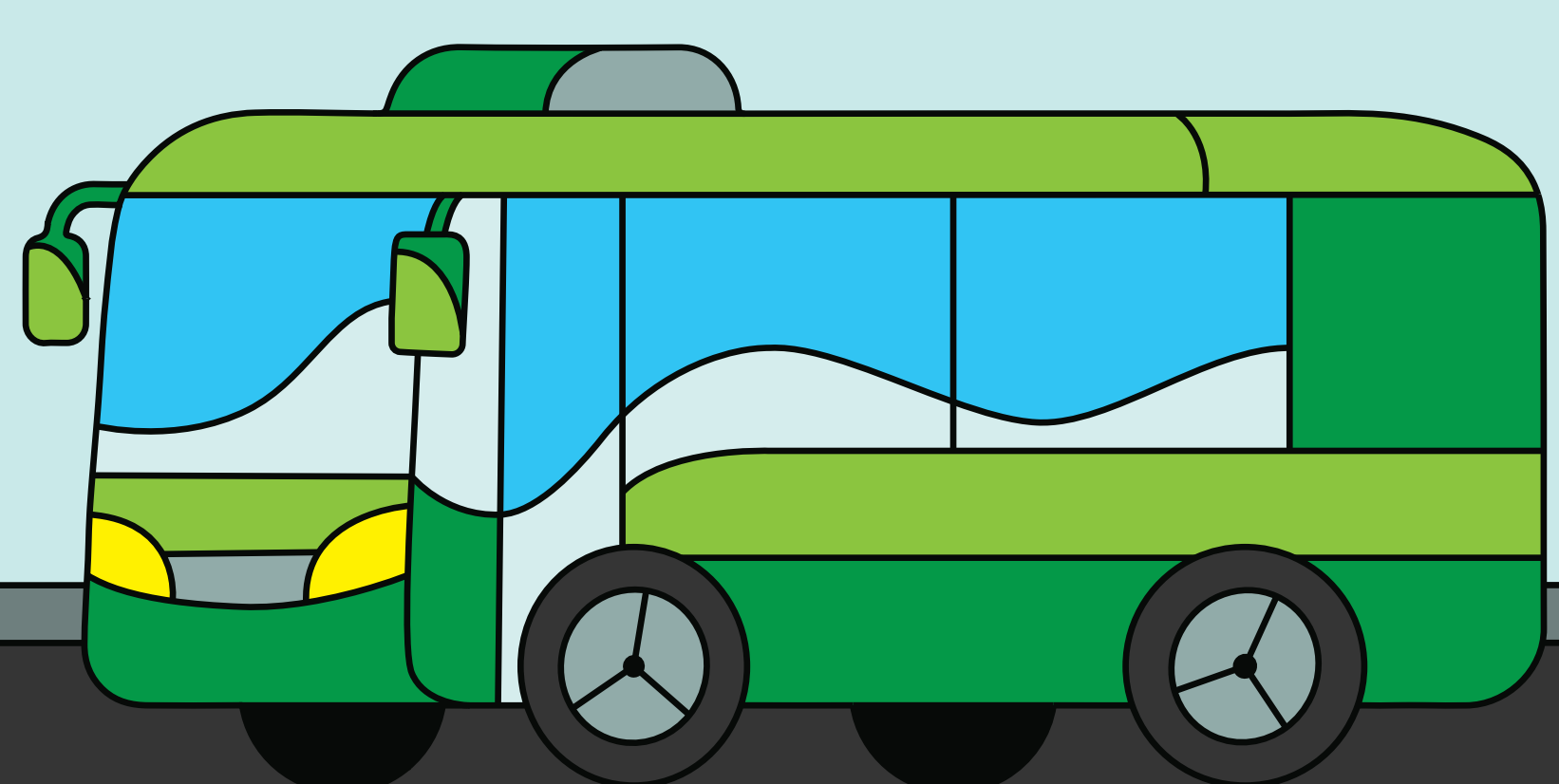
## Badamdar Line

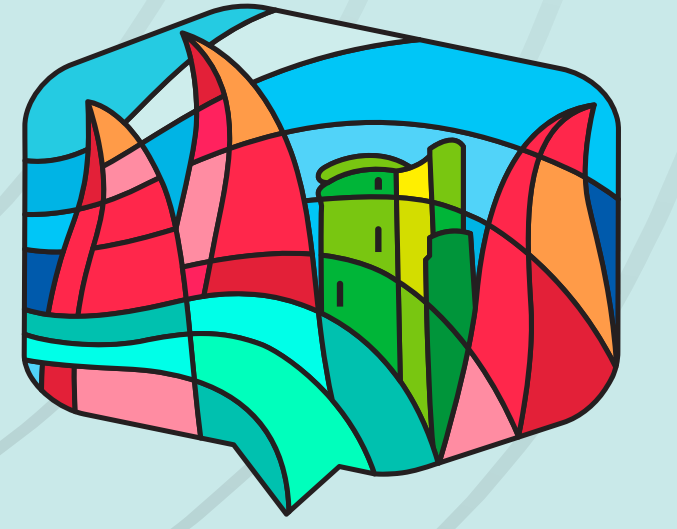
Participants staying in the Badamdar area can take the Badamdar Shuttle Line to the Old City Hub, where they can transfer to dedicated venue-bound shuttles providing direct access to the WUF13 venue.

Stop	Hotels
Badamdar	Badamdar Hotel & Residences
Flame Towers	Fairmont Baku, Flame Towers

## Old City Hub - Aziz Aliyev Street, near Icherisheher Metro Station

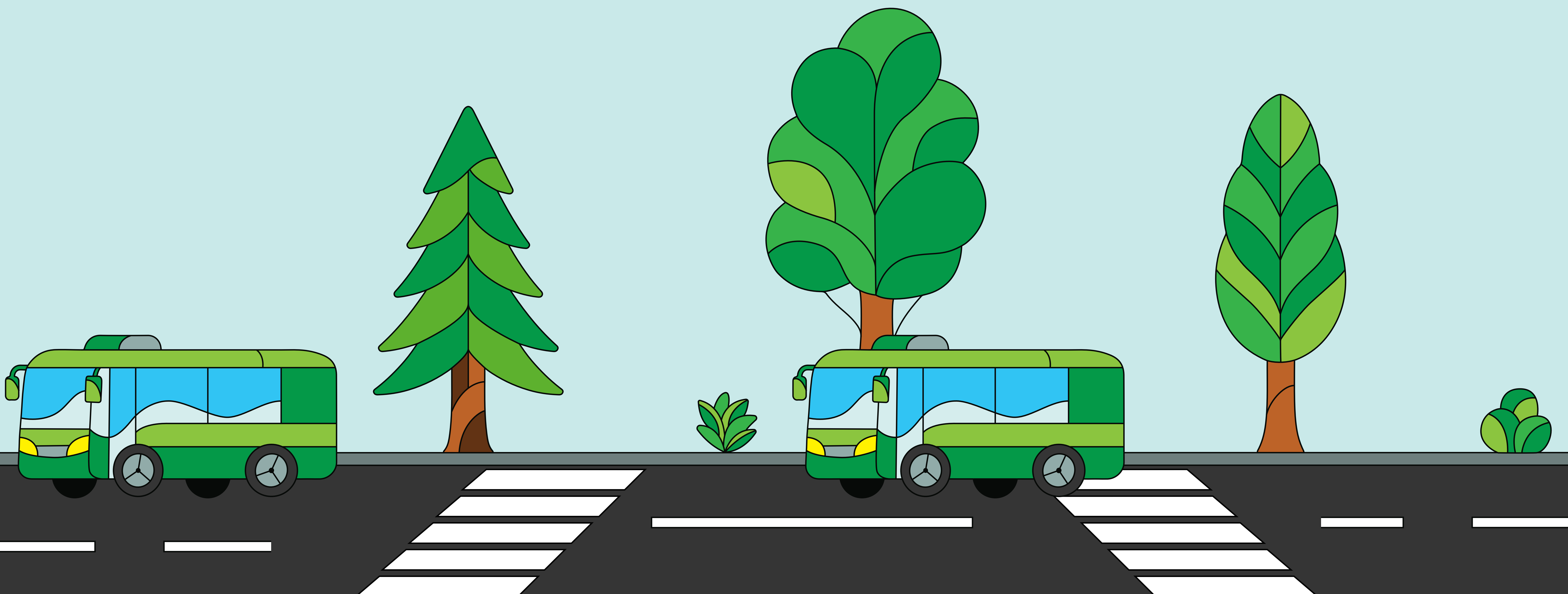
Stop	Hotels
Old City	Passage Hotel
	The Merchant Baku
	Austin Hotel
	Art Gallery Hotel
	Grand Midway Hotel Baku
	Sapphire City Hotel
	Atropat Hotel
	Boutique 19 Hotel
	Molokan Inn
	Shah Palace Luxury Museum Hotel
	Theatrum Hotel Baku
Park Bulvar	InterContinental Baku
	Radisson Hotel Baku
	Hilton Baku Hotel
	Dinamo Hotel Baku

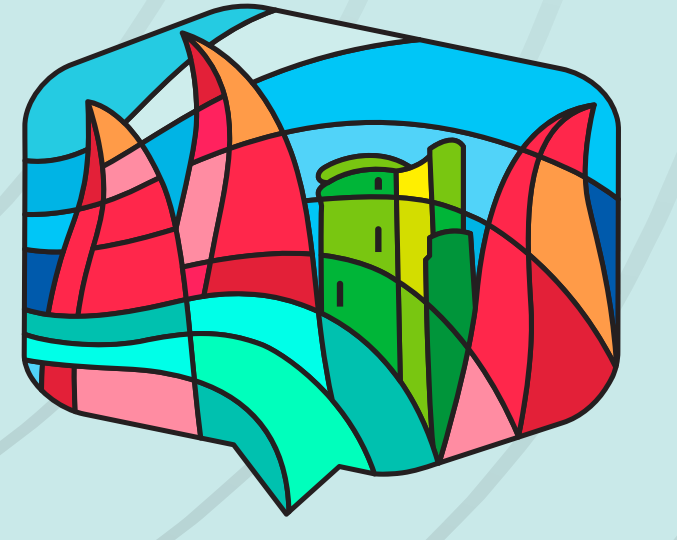




## Narimanov Hub - Ashiq Molla Juma Street

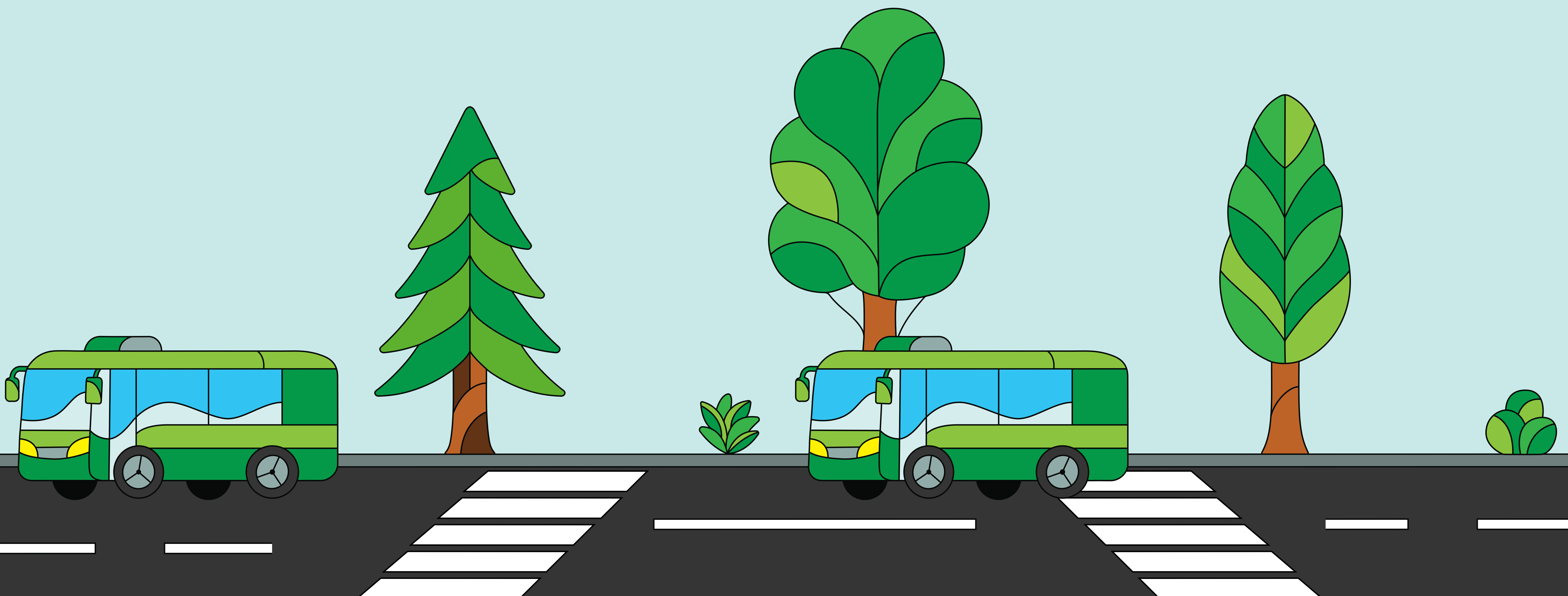
Stop	Hotels
Narimanov	Teatro Boutique Hotel
	Porto Hotel
	Piano Hotel Baku
	Alba Hotel & Spa
	Paradise Baku Hotel
	Ammar Grand Hotel
	Arion Hotel Baku
	Sky Hotel Baku
	Wyndham Baku
	Caspian Business Hotel
	Essam Deluxe Hotel
	Emerald Suite Hotel
	Alis Hotel Baku
	Teatro Boutique Hotel
Askar Hotel	
West Shine Hotel	





## Izmir Hub - Izmir Street

Stop	Hotels
Izmir	Hyatt Regency Baku
	Ivy Garden Hotel
	Mercure Baku City Hotel
Nizami m/s	Baku Home Boutique Hotel
Winter Park	CityLife Boutique Hotel
	Courtyard by Marriott Baku
	Mövenpick Winter Park Baku
	Grand Hotel Baku Central Park
	Sapphire Inn Hotel
	Hazz Hotel
Heydar Aliyev Palace	Diplomat Hotel
	Grand Midway Hotel Baku
	Boutique Hotel Baku
Tbilisi ave.3	Qafqaz Baku City Hotel and Residences
	Grand Hotel Europe
	Premier Palace Baku



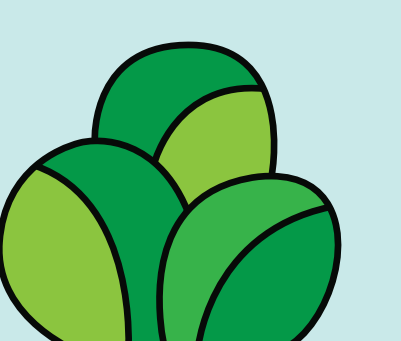


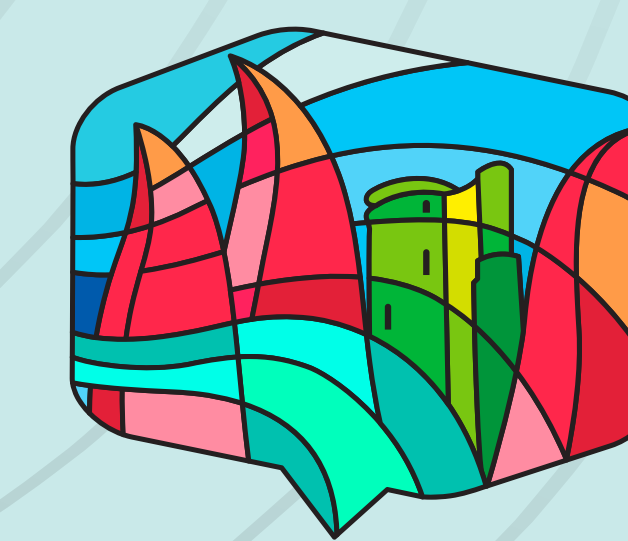
## 28 May Hub - Near 28 May Metro Station

Stop	Hotels
28 May	Iris Hotel Baku
	Parkside Hotel & Apartments
	Premium Park Hotel
	Port Rivoli Hotel
	Khatai Royal Hotel
Azerbaijan Government House	The Landmark Hotel
	Holiday Inn Baku
	JW Marriott Baku
	Rosemary Inn Hotel
	Central Square Hotel
	Don-Dar Hotel

## Ganjlik Hub - Near Ganjlik Metro Station

Stop	Hotels
Mammad Araz	Anatolia Hotel
	Royal Mansion Hotel
	Admiral Hotel
	Arium Hotel Baku
	Capitol Hotel Baku
	Golden Horn Apart Hotel
Azadlig ave. 247	Safran Hotel
	Adisson Hotel
Baku Health Center	For guests staying nearby
Koala Park Baku	For guests staying nearby
Ganjlik Hub	For guests staying nearby
5 № Hospital	Arena Hotels Group
Heydar Aliyev Center	The Ritz-Carlton
	Mont Inn Hotel





### White City Hub - Near by White City Boulevard

Stop	Hotels
White City	Baku Marriott Hotel Boulevard
	Corniche Hotel
White City Circle	Ibis Baku City Hotel
City Park Mall	Days Hotel by Wyndham
Azure Business Center	Nobel Hotel Baku
	Alison Hotel Baku
	Boulevard Side Hotel

### Sea Breeze Hub - Coast of the Caspian Sea

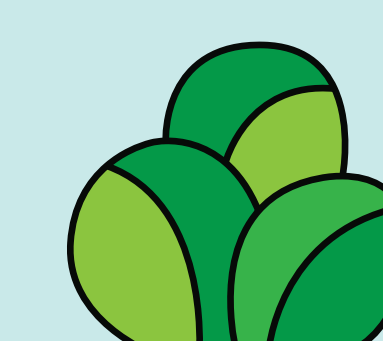
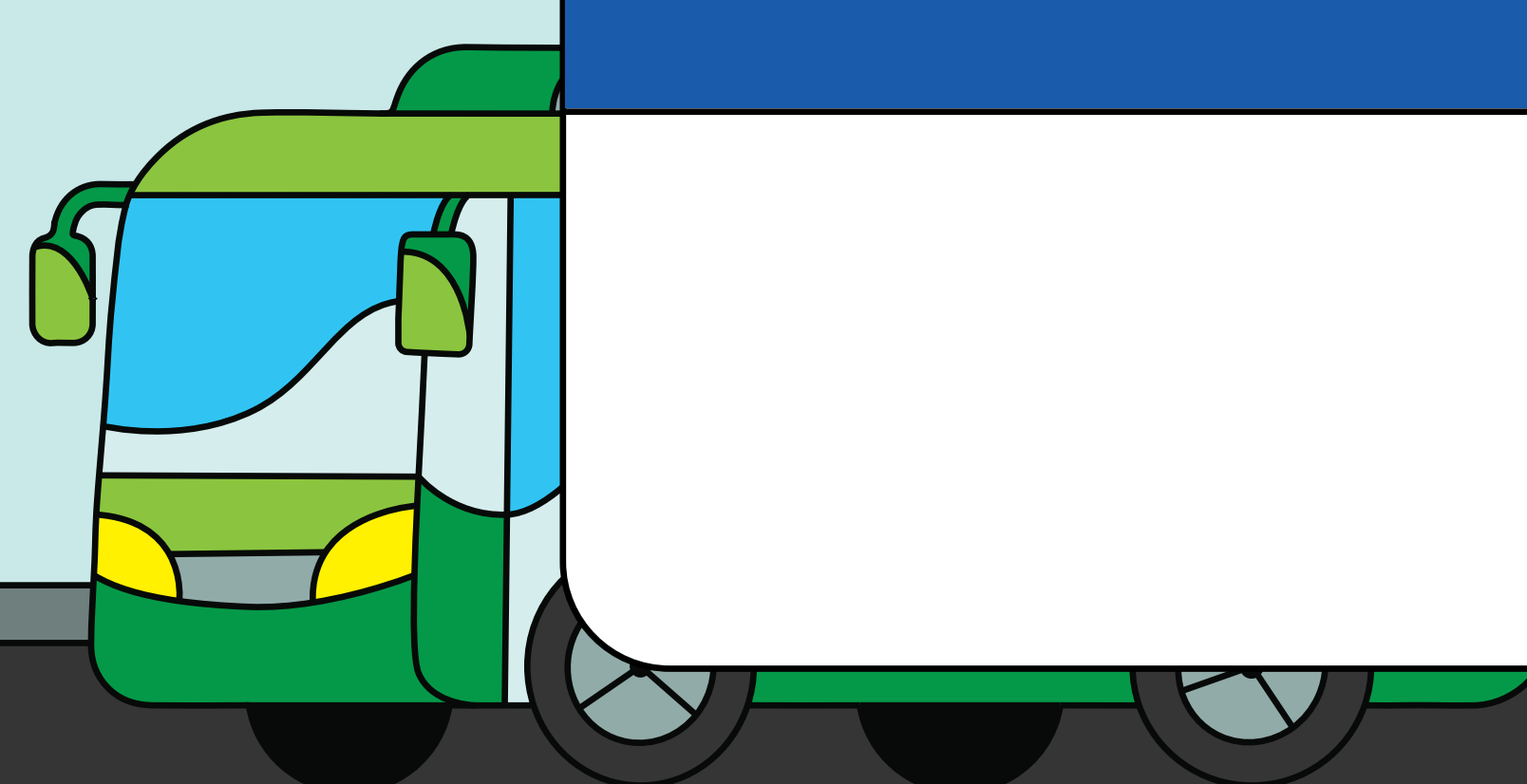
Stop	Hotels
Sea Breeze	Sea Breeze Resort
	La Mer Residence
Bilgah	For guests staying nearby

### Mikayil Aliyev Line - Near Koroghlu Metro Station

Stop	Hotels
Mikayil Aliyev str.	Wyndham Garden Baku
	Ruslan 93

### Koroghlu Hub - Near Koroghlu Metro Station

Stop	Hotels
Koroghlu	Arena Apartments
	Olympic Village



## Getting to the WUF13 venue via Koroghlu

Koroghlu Transport Hub is the main interchange for accessing the WUF13 venue by public transport.

### Public Transport Access

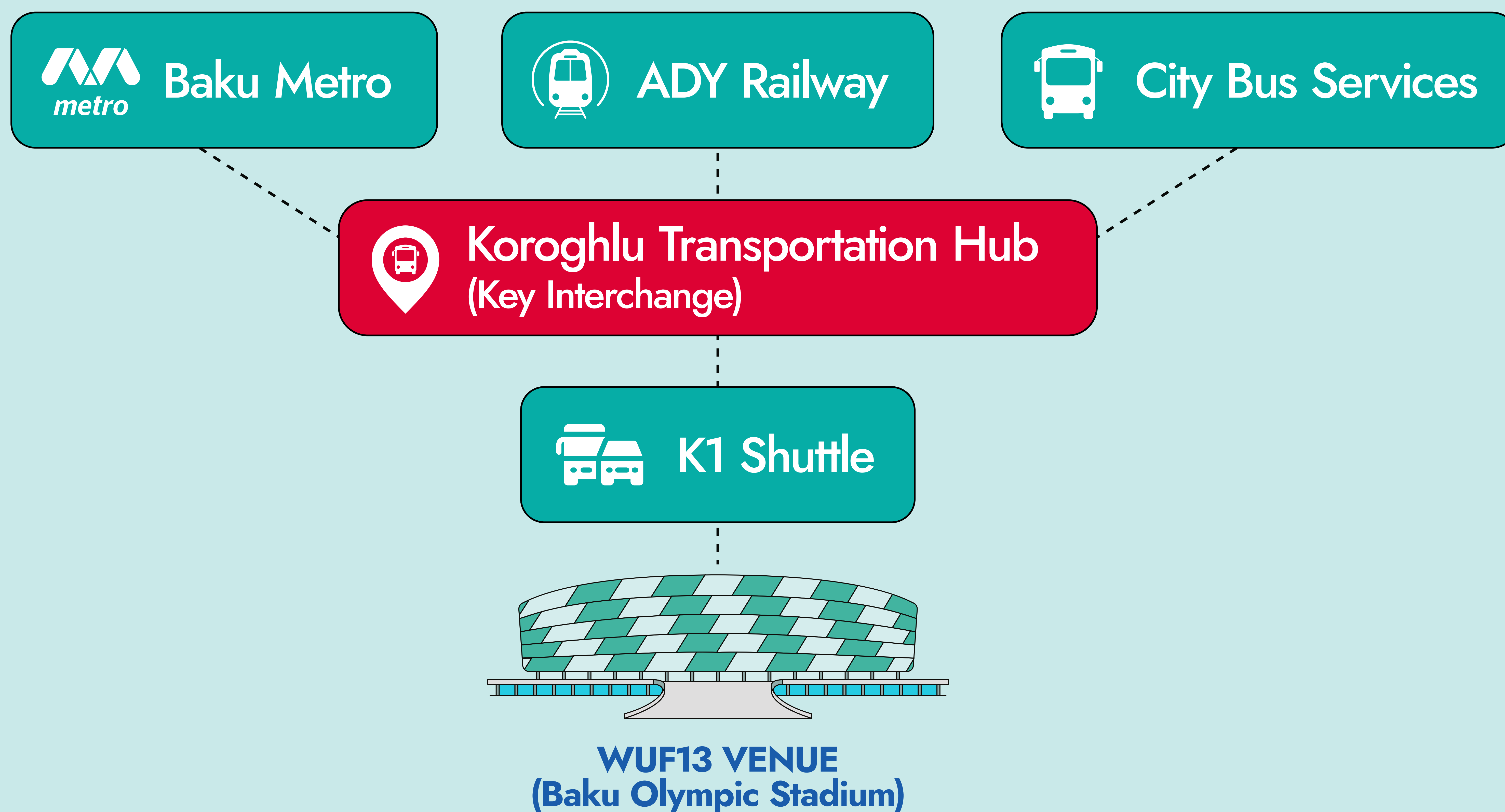
Koroghlu Transport Hub can be accessed via:

Metro  
Suburban Railway (ADY)  
City Bus Network  
Airport Express (H1)



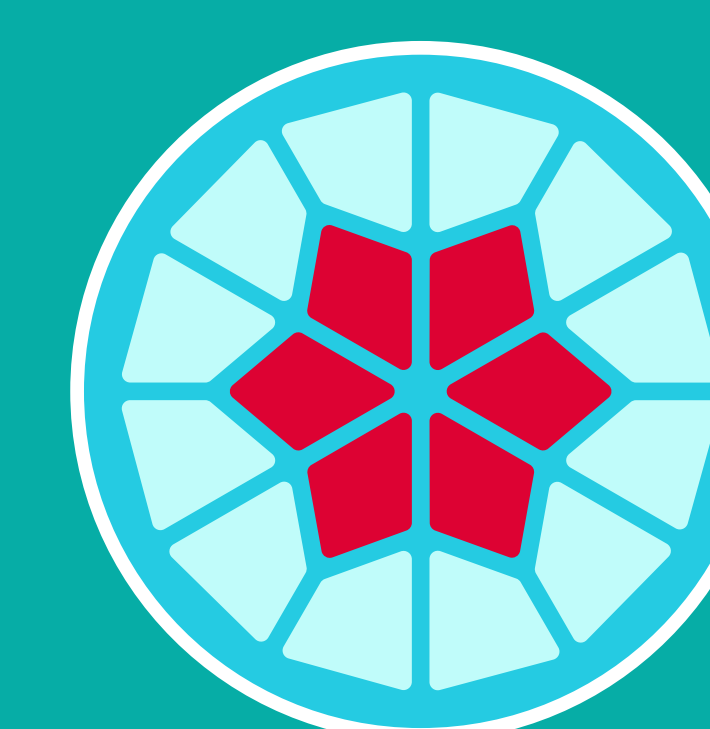
## WUF13 Shuttle Service

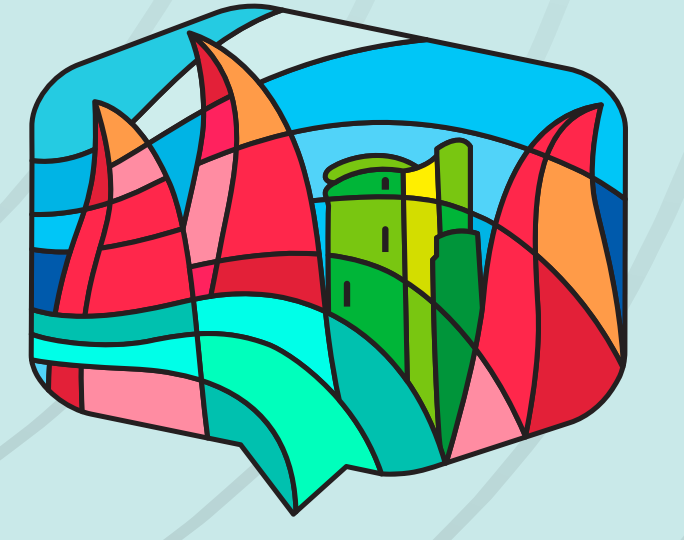
The K1 Shuttle (Koroghlu – WUF13 venue) is free for accredited participants.



### Tips:

The WUF13 shuttle stop is approximately 250 metres from Koroghlu Metro Station, accessible via the underpass. Follow WUF13 signage or ask on-site volunteers for assistance.

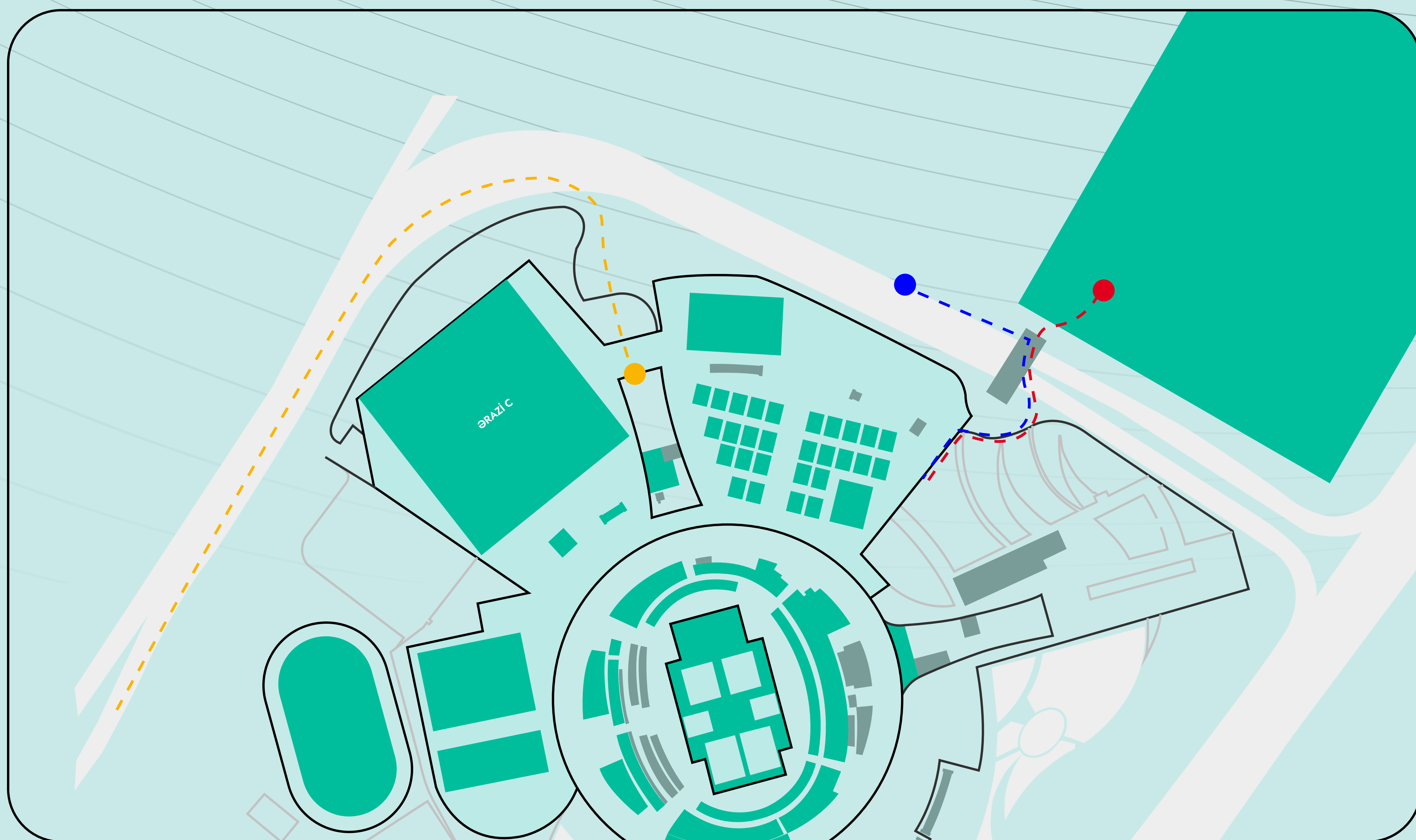



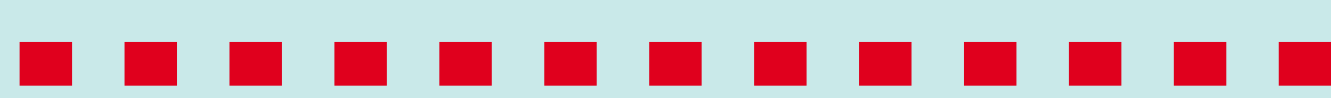
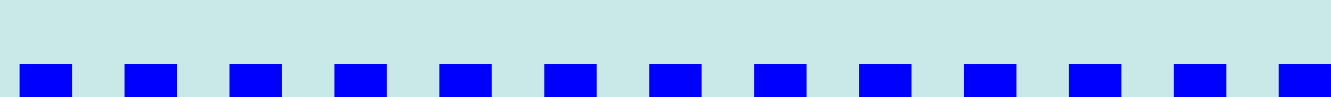


## Getting around the WUF13 venue

### Transport Map and Key Access Points

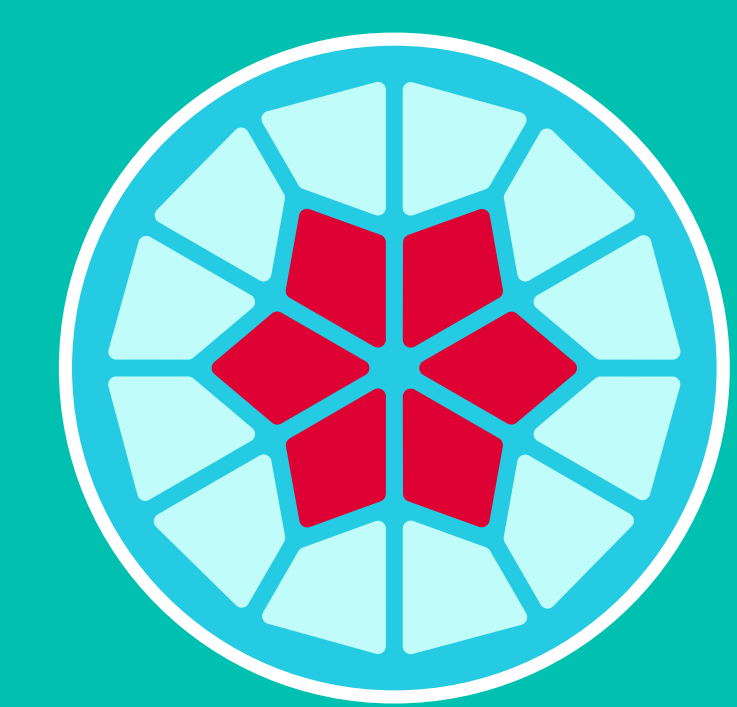
Transport areas at the WUF13 venue are clearly organised to help participants move easily between drop-off, pick-up and other transport zones.



-  to Drop Off
-  to Pick Up
-  to Airport Buses

### Tips:

Shuttle drop-off and pick-up are in separate zones. Follow WUF13 signage to navigate between them.



## Key Transport Zones

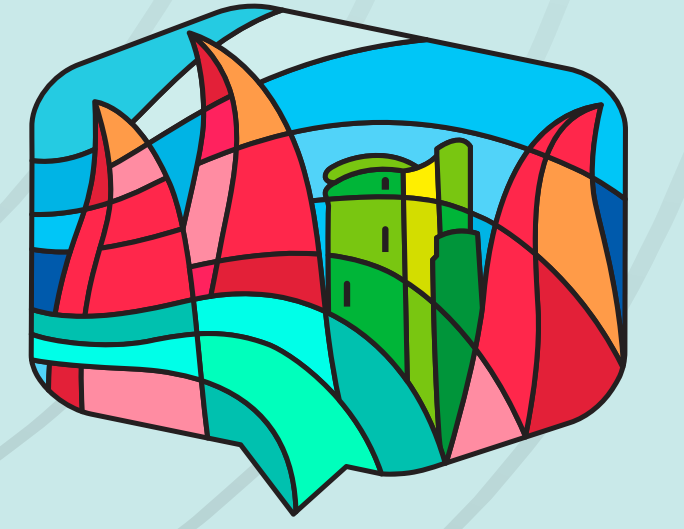
### Shuttle drop-off

Guests arriving by WUF13 shuttle buses are dropped off near the accreditation area.

### Bus Mall (Pick-up)

For return journeys, guests should proceed to the designated pick-up area at the Bus Mall. Access is via the pedestrian bridge.



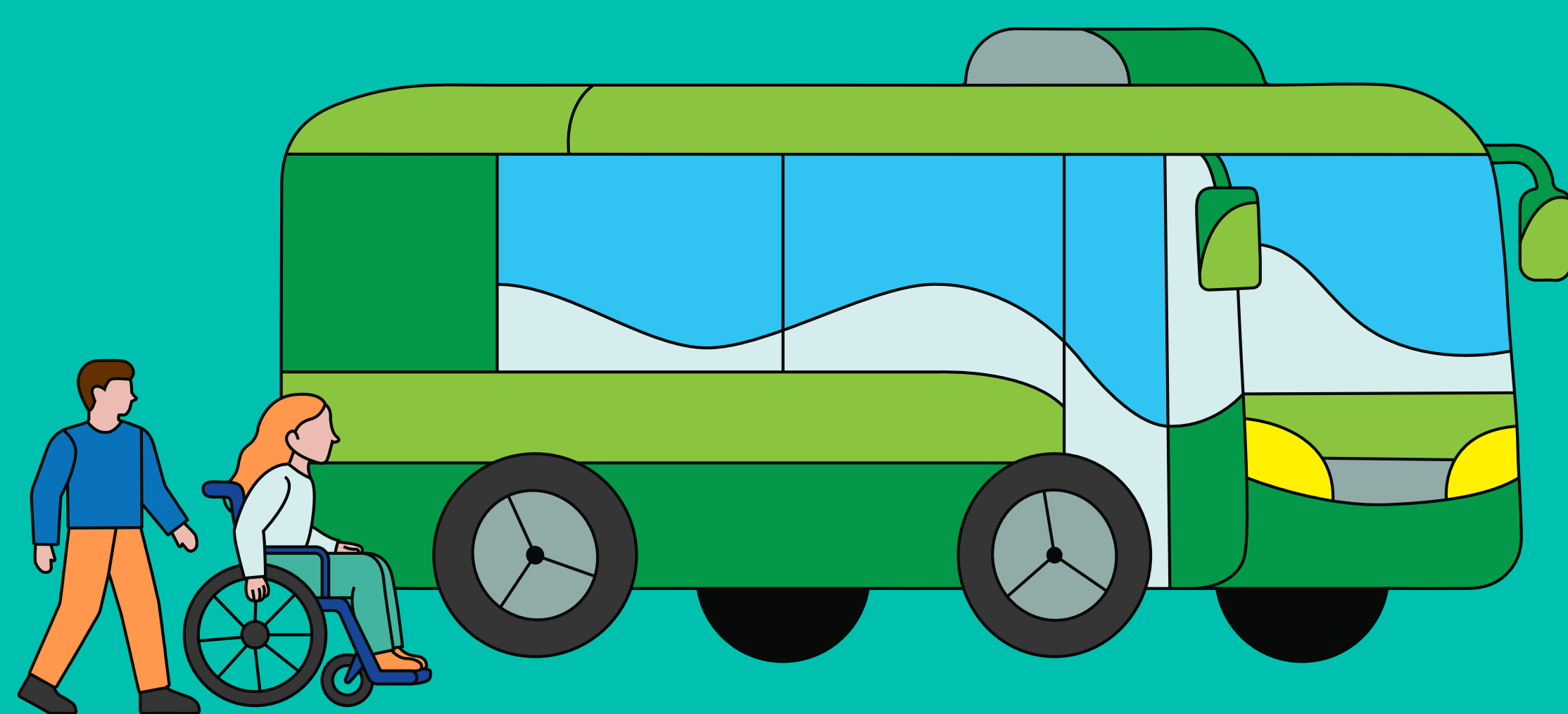


## Accessible Travel and Support Services

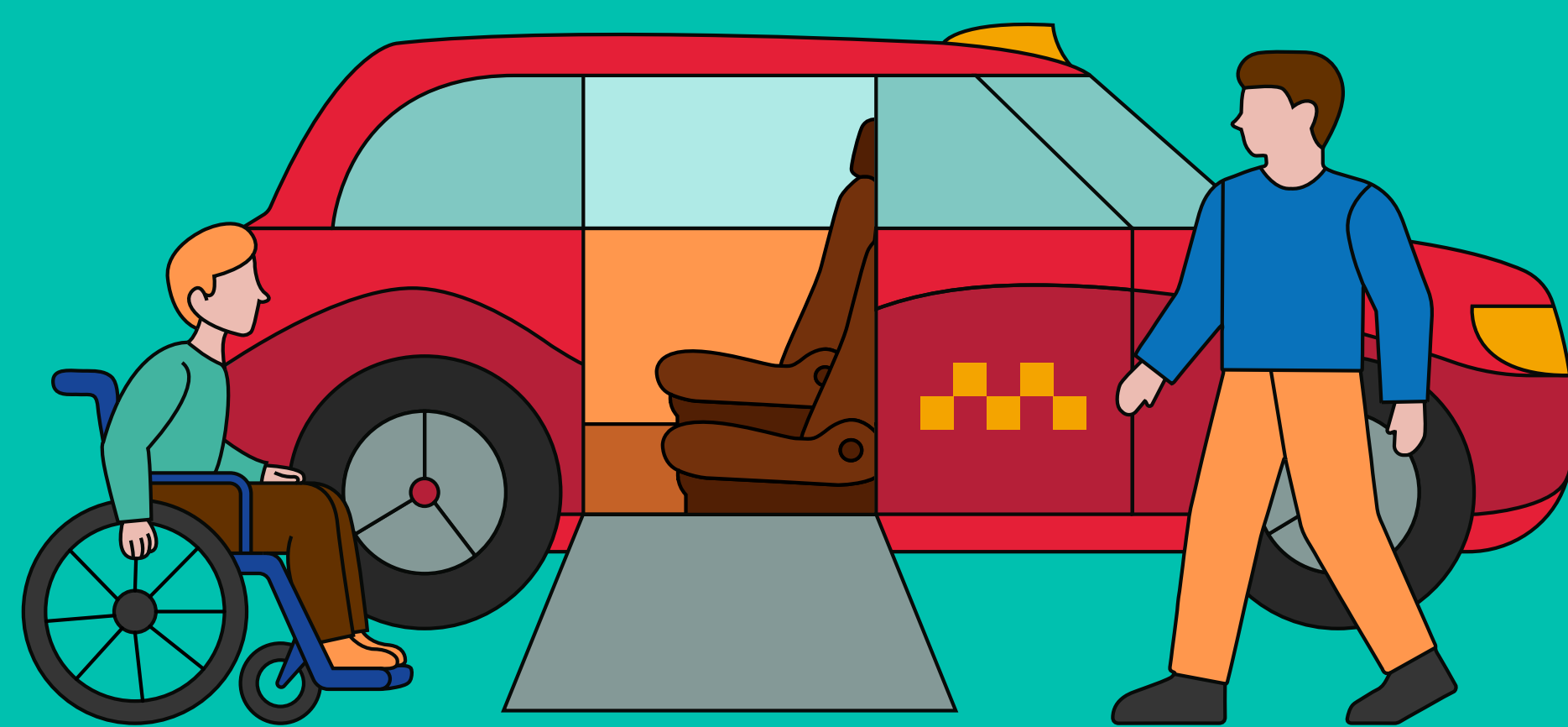
Inclusive travel options and assistance available during WUF13  
WUF13 transport options — including shuttle buses, public buses, the metro, and rail services — are designed to support accessible travel for participants with limited mobility.



Shuttle Accessibility

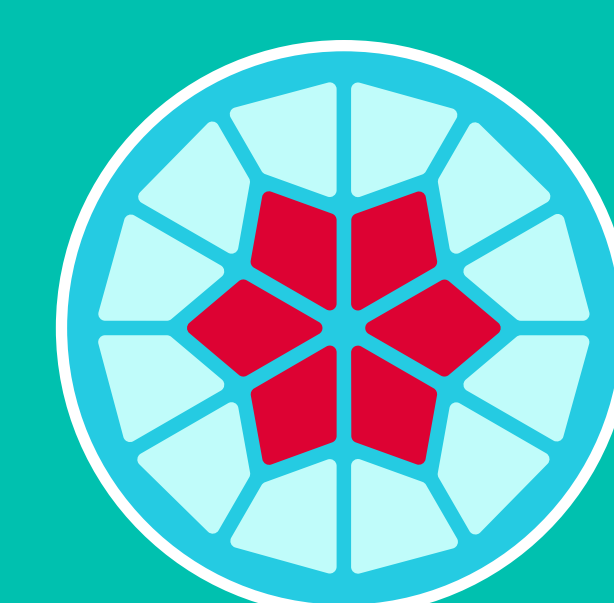


Helping  
People Around



Reaching the  
WUF13 venue

To request accessible transport services, please contact the  
Accessibility Assistance Helpline on +994 55 125 4222  
or by e-mail at [accessibility@wuf13.az](mailto:accessibility@wuf13.az)





## Accessibility Features at a Glance

**Shuttle Buses** – All WUF13 shuttle buses are equipped with ramps, wheelchair spaces and boarding assistance.

**Metro and Railway** – Lifts, ramps, and mobility assistance are available at all Baku Metro and ADY stations.

For detailed information regarding accessibility services in the Baku Metro, please visit the [link](#).

**Airport Assistance** – A free wheelchair-accessible taxi service is available at Terminal 1. Please visit the WUF13 Information Desk upon arrival to receive a voucher.

**Venue Accessibility** – The pedestrian bridge between the event venue and the Venue Transport Hub is equipped with a lift. Drop-off points are located 100–350 metres from the entrance.

**Volunteer Support** – Transport volunteers are stationed at all hubs, the airport and the venue throughout the event.

## Accessible Taxi Services for Passengers with Reduced Mobility

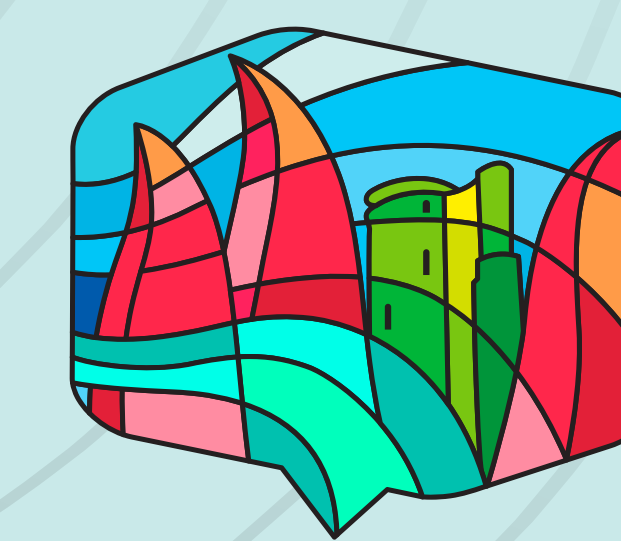


### Drop-off

Accessible taxis drop off passengers at the designated area near the WUF13 venue.

### Pick-up

Accessible taxis are available at the designated pick-up point.



## Transport Help and Information

### Contacts, support services and useful tips during WUF13

The WUF13 Transport Helpdesk is available to assist participants with all transport-related enquiries before and during WUF13.

#### WUF13 Transport Helpdesk



+994 55 125 42 54



transport@wuf13.az

#### WUF13 Transport Helpdesk (Airport)



+994 55 125 42 82

#### Airport & On-site Transport Information

Information desks are available at Heydar Aliyev International Airport Terminal 1 and at the main entrance of the venue (Transport Zone). Please look for the WUF13-branded information desk.

#### Emergency contact information:



103

Ambulance



102

Police

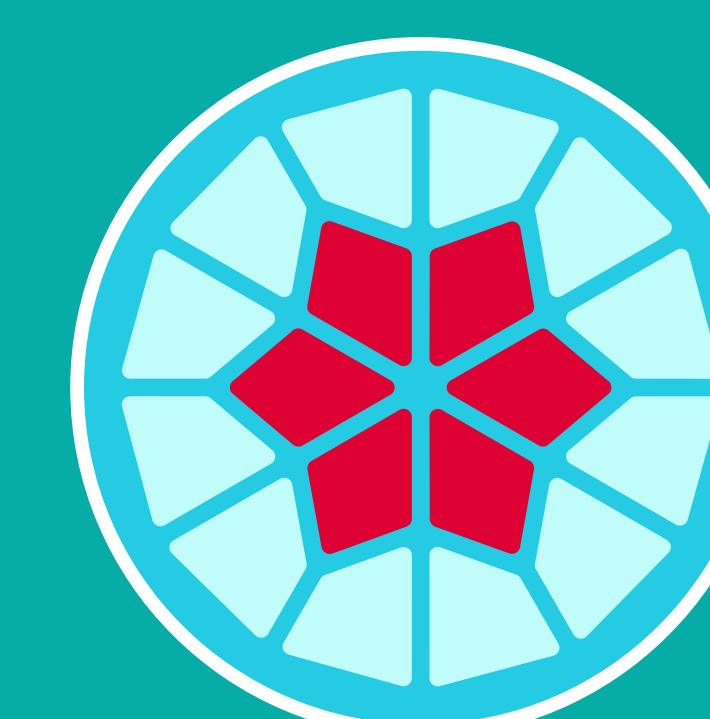


101

Fire Department

#### Quick Access — Scan QR Codes:

WUF13 Transport Schedules  
Digital Transport Map



#### Helpful Tips:

Keep your accreditation badge visible when using WUF13 shuttle services.  
Download the AYNA MaaS app for real-time public transport information.  
Allow extra time for travel during peak hours (07:00–09:00 and 17:00–19:00).  
Save the Helpdesk number (+994 10 252 57 80) before arrival.

#### Useful Links:

[wuf13.az](http://wuf13.az) | [Travel Guide](#) | AYNA MaaS app ([iOS](#) / [Android](#)) [map.wuf13.az](http://map.wuf13.az)